

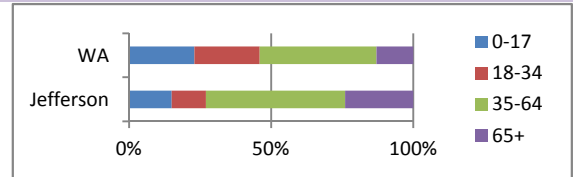
## JEFFERSON COUNTY WOMEN

Source: American Community Survey (US Census), 2005-2009

	JEFFERSON COUNTY		WA STATE
<b>Female Population</b>	14,755	50.5%	50.1%

### Females by Age Group

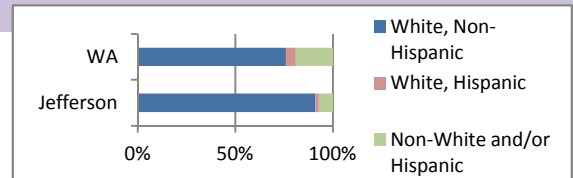
0-17	2,210	15%	23%
18-34	1,742	12%	23%
35-64	7,190	49%	41%
65+	3,613	24%	13%



Female Median Age	53.3		37.8
Male Median Age	50.9		35.7

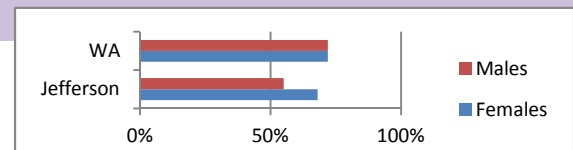
### Females by Race/Ethnicity

White, Non-Hispanic	13,437	91%	76%
White, Hispanic	254	2%	5%
Non-White and/or Hispanic	1,064	7%	19%



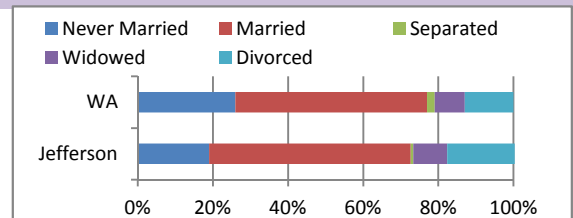
### Age 16+ in the Labor Force

Females	8,773	68%	72%
Males	6,782	55%	72%



### Marital Status, Females age 15+

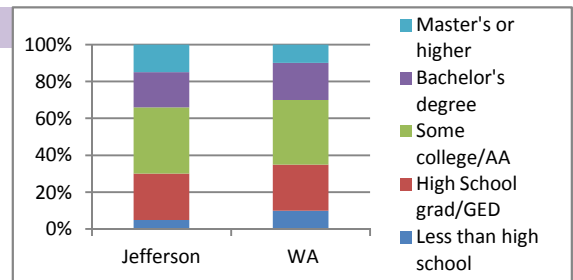
Never Married	2,437	19%	26%
Married	6,992	54%	51%
Separated	87	1%	2%
Widowed	1,233	9%	8%
Divorced	2,282	18%	13%



### Educational Attainment, Age 25+

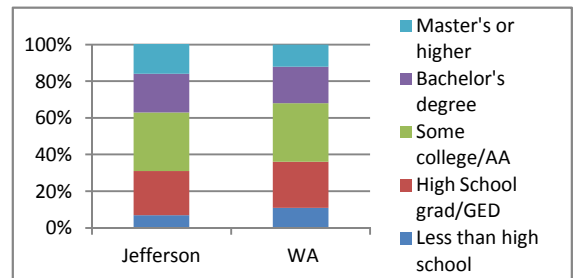
#### Females

Less than high school	620	5%	10%
High School grad/GED	2,898	25%	25%
Some college/AA	4,175	36%	35%
Bachelor's degree	2,280	19%	20%
Master's or higher	1,763	15%	10%



#### Males

Less than high school	788	7%	11%
High School grad/GED	2,620	24%	25%
Some college/AA	3,456	32%	32%
Bachelor's degree	2,250	21%	20%
Master's or higher	1,856	17%	12%



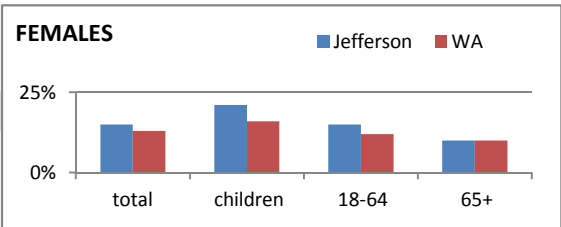
## JEFFERSON COUNTY WOMEN

Source: American Community Survey (US Census), 2005-2009

### JEFFERSON COUNTY WA STATE

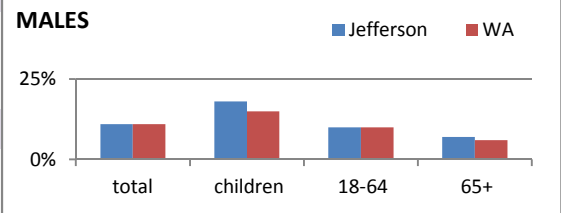
#### Living in Poverty

Females	2,165	15%	13%
Males	1,521	11%	11%



#### Children age 0-18

Females	453	21%	16%
Males	447	18%	15%



#### Age 18-64

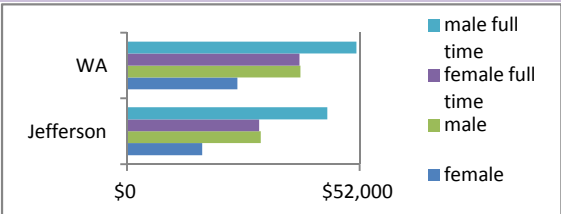
Females	1,362	15%	12%
Males	848	10%	10%

#### Age 65+

Females	350	10%	10%
Males	226	7%	6%

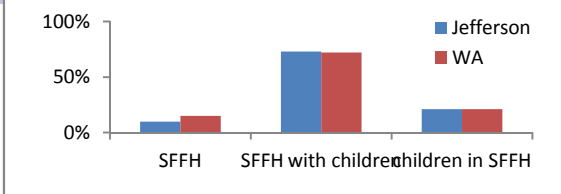
#### Past 12-month Earnings, age 16+, 2009 inflation adjusted dollars

Females	\$16,808	\$24,635
Males	\$29,909	\$38,746
Females, worked full time	\$29,504	\$38,585
Males, worked full time	\$44,779	\$51,275



#### Single Female Family Households (SFFH)

SFFH as % of all family households	839	10%	15%
% of SFFH with children	609	73%	72%
# and % of children in SFFH	968	21%	21%



## JEFFERSON COUNTY WOMEN

Source: Behavioral Risk Factor Surveillance System

	JEFFERSON COUNTY (2009-10)				Gender comparisons	WA STATE (2010)				Gender comparisons	Jefferson & WA Female Comparisons
	Female	(95% CI)	Male	(95% CI)		Female	(95% CI)	Male	(95% CI)		
Excellent, very good, good general health	<b>82.5%</b>	72.8-89.3	<b>87.5%</b>	78.7-92.9	females 5% worse (not statistically)	<b>85.1%</b>	84.2-85.9	<b>86.7%</b>	85.6-87.6		
Had 1+ mentally unhealthy day in past month	<b>44.3%</b>	34.9-54.0	<b>20.8%</b>	13.0-31.7	females statistically worse	<b>40.2%</b>	39.0-41.5	<b>30.3%</b>	28.7-31.8	females statistically worse	
Had 1+ physically unhealthy day in past month	<b>37.7%</b>	28.7-47.7	<b>36.8%</b>	26.7-48.3		<b>39.0%</b>	37.7-40.2	<b>32.4%</b>	30.9-33.9	females statistically worse	
Frequent mental distress (14 or more mentally unhealthy days in past month)	<b>17.9%</b>	10.6-28.6	<b>n &lt;35</b>			<b>12.5%</b>	11.6-13.4	<b>8.3%</b>	7.3-9.3	females statistically worse	Jefferson worse (not statistically)
Adverse Childhood Experiences score (average)	<b>1.8</b>	1.13-2.39	<b>1.7</b>	1.27-2.07		<b>1.8</b>	1.75-1.88	<b>1.5</b>	1.44-1.59	females statistically worse	
Have health insurance	<b>84.4%</b>	72.0-91.9	<b>83.0%</b>	69.9-91.1		<b>85.1%</b>	84.0-86.2	<b>81.9%</b>	80.4-83.3	females statistically better	
Adequately insured (insured and able to pay for needed care)	<b>76.6%</b>	65.3-85.0	<b>79.0%</b>	66.6-87.6		<b>77.1%</b>	75.8-78.2	<b>76.8%</b>	75.3-78.4		
Have a personal doctor or health care provider	<b>78.7%</b>	67.5-86.8	<b>78.9%</b>	67.8-86.9		<b>82.4%</b>	81.2-83.5	<b>71.5%</b>	69.9-73.1	females statistically better	
Had routine check-up in past year	<b>53.5%</b>	43.8-62.9	<b>60.4%</b>	48.3-71.4	females 7% worse (not statistically)	<b>65.1%</b>	63.8-66.3	<b>53.5%</b>	51.9-55.1	females statistically better	Jefferson statistically worse
Dental visit in past year (2010)	<b>64.2%</b>	53.7-73.6	<b>73.7%</b>	63.4-82.0	females 9.5% worse (not statistically)	<b>71.8%</b>	70.7-73.0	<b>67.2%</b>	65.6-68.7	females statistically better	Jefferson worse (not statistically)
Not current smoker	<b>82.0%</b>	71.4-89.3	<b>84.6%</b>	72.2-92.1		<b>85.3%</b>	84.3-86.2	<b>83.2%</b>	81.8-84.5		
Had 1+ alcoholic drinks in past month	<b>63.9%</b>	55.0-71.9	<b>67.9%</b>	55.8-78.0		<b>53.9%</b>	52.7-55.2	<b>63.5%</b>	62.0-65.1	females statistically lower	Jefferson higher (not statistically)
Had seasonal flu shot in past year	<b>41.3%</b>	33.0-50.2	<b>41.3%</b>	31.2-52.3		<b>43.8%</b>	42.6-45.1	<b>37.0%</b>	35.5-38.4	females statistically better	
Ever had pneumonia shot	<b>29.2%</b>	22.8-36.5	<b>31.3%</b>	22.8-41.3		<b>30.0%</b>	28.9-31.1	<b>29.0%</b>	27.6-30.5		
Leisure time physical activity	<b>87.5%</b>	82.7-91.0	<b>82.0%</b>	69.5-90.0	females 5.5% better (not statistically)	<b>80.7%</b>	79.7-81.7	<b>81.7%</b>	80.4-82.9		Jefferson better (not statistically)
At a healthy weight	<b>61.1%</b>	51.8-69.7	<b>35.7%</b>	25.5-47.4	females statistically better	<b>45.9%</b>	44.6-47.2	<b>32.9%</b>	31.3-34.4	females statistically better	Jefferson statistically better