



JEFFERSON COUNTY EMERGENCY OPERATIONS CENTER
SITUATION REPORT - SITREP



Incident in Progress - Authorized for general distribution

REFER INQUIRIES TO: Jefferson County Department of Emergency Management: Phone - 360.385.9368, Fax - 360.385.9376, Email - jcdem@co.jefferson.wa.us

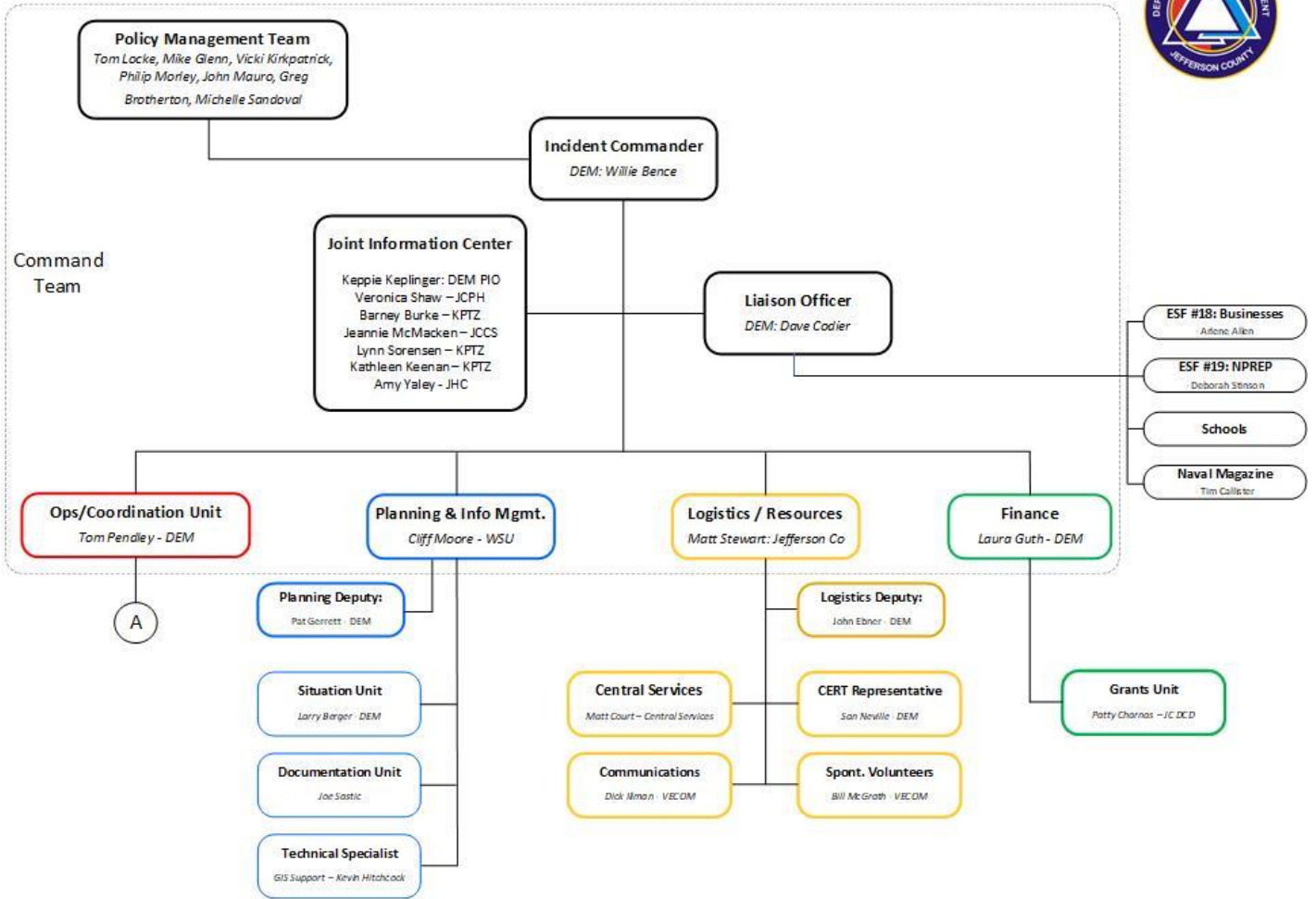
Incident Name/Hazard	COVID-19 Pandemic		Mission Number 20-0265	Version 28
Operational Period				
From Date/Time	4/21/20 - 0830	To Date/Time	4/21/2020 - 0830	
Current Threat Summary				
No new positive cases from 4/9/20. As of 4/21/20 at 1701, there are 28 confirmed cases of COVID-19 in Jefferson County, with 9 presumably exposed outside of the area and 19 confirmed as community transmission. There are now 738 total tested, with 699 negative results, and 11 pending – 3.9% positive rate for results received thus far. There are 23 Recovered patients. DOH: people are considered recovered at 28 days from the onset of symptoms if they are alive and not hospitalized.				
Incident Priorities				
<ul style="list-style-type: none"> A. Ensure safety and provide for protection of all first responders and healthcare providers B. Continue to monitor COVID-19 threat and assess potential impacts. C. Provide timely, informative, relevant, and accurate information to general public regarding threat and mitigating activities with a special emphasis on: <ul style="list-style-type: none"> a. Jefferson County's vulnerable populations b. Jefferson County's small business community D. Based on COVID-19 threat profile, continue advanced planning for potential necessary response activities including the: <ul style="list-style-type: none"> a. Isolation and/or quarantine shelters for affected population, specifically: <ul style="list-style-type: none"> 1. Transient population 2. Individuals discharged from the hospital but unable to isolate/quarantine on their own b. Planning for field hospitals to ease strain on healthcare system and handle surge of patients c. Recruitment, intake, vetting, just-in-time training, and deployment of spontaneous/event-based volunteers d. Facilitate meal and/or critical supply delivery to individuals in isolation and/or quarantine e. Confirmation of trigger points for ramping up response activities to meet the evolving COVID-19 threat; continue to plan for peak surge of outbreak and attendant strain on capacity of healthcare system f. Identify resources for childcare/support opportunities in face of school closures 				
Current Resource Needs/Shortfalls				
<ul style="list-style-type: none"> 1. PPE. Shortages continue, resource requests are gradually being filled across the state (N95 masks, ventilators, hand sanitizer and other PPE). 2. Operational coordination. EOC operational model remains a hybrid of Virtual & EOC with OPS Cell at EFJR 11. 3. Childcare for 0 to 5 age range for first responder and essential employees. 				
Situation Status Report		Jefferson County Department of Emergency Management		
Page 1 of 6 (plus noted attachments if any)				

THIS DOCUMENT IS NOT FOR EXTERNAL DISTRIBUTION – PLEASE SHARE WITH RESPONSE PARTNERS AND KEY STAKEHOLDERS ONLY

Incident Name/Hazard	COVID-19 Pandemic	Mission Number 20-0265	Version 28
Operational Summary			
<p>Mission Summary: Isolation/Quarantine Facility</p> <ul style="list-style-type: none"> ● Supporting Agencies: Cherish Cronmiller, OlyCap; Andy Stockton and team, ESF6 ● Additional Support: Logistics, Food, Finance; Spontaneous Volunteers ● Next Operational Period Objectives: <ul style="list-style-type: none"> ○ None reported. Policy group exploring ways to expand capacity at hotel facility. Continuing objectives: <ul style="list-style-type: none"> ○ Continue planning for training/recruitment of volunteer staff ○ Coordinate with JHC and JCPH on protocol <p>Mission Summary: Medical Surge Capacity</p> <ul style="list-style-type: none"> ● Subproject 1: Increase bed capacity of Jefferson Healthcare <ul style="list-style-type: none"> ○ Project lead: Jeff Heistand – Jefferson Healthcare ○ Additional Support: Logistics ○ Next Operational Period Objectives: <ul style="list-style-type: none"> ▪ None noted ○ Continuing objectives: <ul style="list-style-type: none"> ▪ Develop strategy to increase JHC bed capacity from 25 to 75 beds to meet potential 90 acute/intensive care bed need for peak of COVID-19 pandemic ▪ Coordinate with field hospital planning group and isolation and quarantine planning group to ensure overall community needs are being met ● Subproject 2: Develop Field Hospital options for Jefferson County/Olympic Peninsula <ul style="list-style-type: none"> ○ Project lead: HR Bohman – DEM ○ Additional support: David Codier, Liaison; Pat Garrett, Plans; input from JHC and JCPH as needed ○ Continuing objectives: <ul style="list-style-type: none"> ▪ Determine options, availability, logistical needs, and viability of field hospital resource on Olympic Peninsula, focused on providing 30 – 45 ICU/intensive care beds <p>Mission Summary: Develop Casualty Collection Plan and Facility</p> <ul style="list-style-type: none"> ● Project Lead: James Kennedy – Prosecutor Coroner ● Supporting Agencies: Jefferson Healthcare; Fire/EMS ● Continuing objectives: <ul style="list-style-type: none"> ○ Continue creation of casualty collection point at identified facility ○ Communicate identification and collection process, ensuring safety of all involved. <p>Mission Summary: Engage Event-Based Volunteers/Provide Food Support for Vulnerable Populations</p> <ul style="list-style-type: none"> ● Project Leads: Cherish Cronmiller – OlyCap; Dave Seabrook – Food Unit; Sam Neville- Spontaneous Volunteers ● Supporting Agencies: Andy Stockton, ESF6 Mass Care; Keppie Keplinger, PIO ● Additional Support: All agencies potentially requesting event-based volunteer support ● Next Operational Period Objectives: <ul style="list-style-type: none"> ○ Complete plan to coordinate food support for quarantined patients as a referral service through JHC & PH ● Continuing Objectives: <ul style="list-style-type: none"> ○ Provide requesting partner agencies with skilled event-based volunteers at their request ○ Develop and communicate plan to answer calls for help and provide food support, utilizing event-based volunteers as needed. 			
Situation Status Report		Jefferson County Department of Emergency Management	
Page 2 of 6 (plus noted attachments if any)			

Organizational Structure

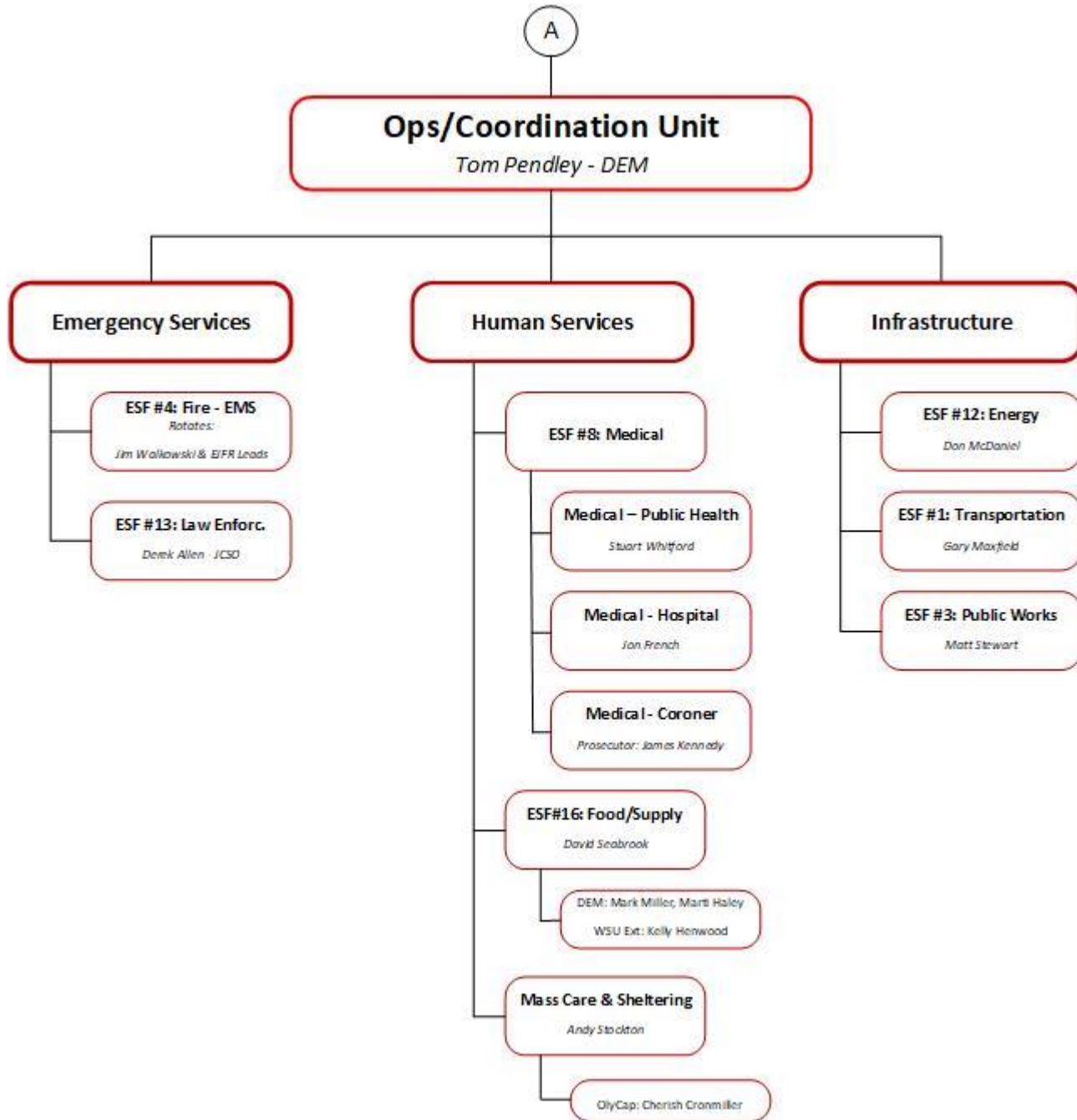
DEM: COVID-19 ICS Organizational Chart
Jefferson County



V: 04172020

Notes/Comments

Organizational Structure



Situation Status Report

5 of 6

Incident Name/Hazard	COVID-19 Pandemic	Mission Number	20-0265	Version	28
ESF 8: Medical – Public Health					
No new cases. Added a new section to the COVID page to record number of positive cases “recovered” along with definition for what that means. As of today, 22 of the 28 cases can be classified as recovered. Request we start these calls by reminding people calls are confidential. Willie considering and will have update for tomorrow’s meeting.					
ESF 8: Medical – Jefferson Healthcare					
N/A					
ESF 8: Medical – Prosecutor Coroner					
N/A.					
ESF 4: Fire/Emergency Medical Services					
Nothing new.					
ESF 13: Law Enforcement					
Nothing new. Thank you for the boxes of facemasks.					
ESF 6: Mass Care					
N/A					
Food/Supply Unit					
Updated the grocery list to indicate Food Coop has online ordering and parking lot pickup. 703 households/1634 individuals served by food bank last week. Staying stable and good on food supply. The Food Bank numbers do not include food supplied by the schools. Started supporting quarantined individuals with food service -not for public access, by referral only through Jefferson Healthcare or Public Health.					
Policy Management Group					
Nothing new. Working on options to expand capacity at isolation/shelter motel.					
Situation Status Report				Page 5 of 6	

Situation Status Report

6 of 6

Incident Name/Hazard	COVID-19 Pandemic		Mission Number 20-0265	Version 28
Public Information				
<p>Community SitRep is DEM's version of a daily press release. Let us know if you or your agency want information included or if want to see something addressed in that SitRep. We want the SitRep to be useful, please pass them on to others.</p> <p>KPTZ: News story clarifying how to report violations is not a call to turn in your neighbors, but just a reminder not to use 911 for such purposes. Also emphasized LE is focusing on education over enforcement action.</p>				
Liaison Officer				
N/A				
Spontaneous Volunteers				
N/A				
Logistics				
<p>May expect a few items to arrive this week. Deadline for ordering this week will change. Focus on items not yet delivered from State or not available elsewhere. Some items are starting to show up in grocery and hardware stores again: gloves, hand sanitizer, sanitizing wipes, paper towels, etc. Many websites are offering PPE in smaller quantities.</p>				
Finance				
<p>Getting information from state as to how we can use volunteers. Putting together an email with specifics. Pay attention to volunteers and hours. Coordinating with Patty Charnas at County who is working on other grants while Laura covering FEMA grants.</p>				
Other				
<p>State EMD put together a process for non-pharmaceutical interventions (NPI) or social distancing. Process shows how to track data once we get back to something more normal. Planning section is looking at doing an analysis in JeffCo and looking at when we might be able to relax social distancing. Don't want to do something separate from the State or what Gov. Inslee wants. It will be interesting to compare what we are doing with the rest of the state. Pat Garrett, Larry Berger and HR Bohman in the planning section are starting this work.</p> <p>https://covid19.healthdata.org/projections Modelling to reference for projecting demand. As of today, the site is still projecting that WA peak resource need was April 2.</p> <p>Coronavirus.wa.gov – continue to direct callers to use this site to report business violations. Sheriff checking with other counties to find out what they are doing to help reduce these violations.</p> <p>Anyone expressing interest in volunteering should be directed to DEM website – general skills redirected to OlyCap, specific skills to DEM.</p>				
Authentication				
Submitted By	Name Willie Bence	Position Incident Command	Date/Time 4/21/20	
Situation Status Report				Page 6 of 6

